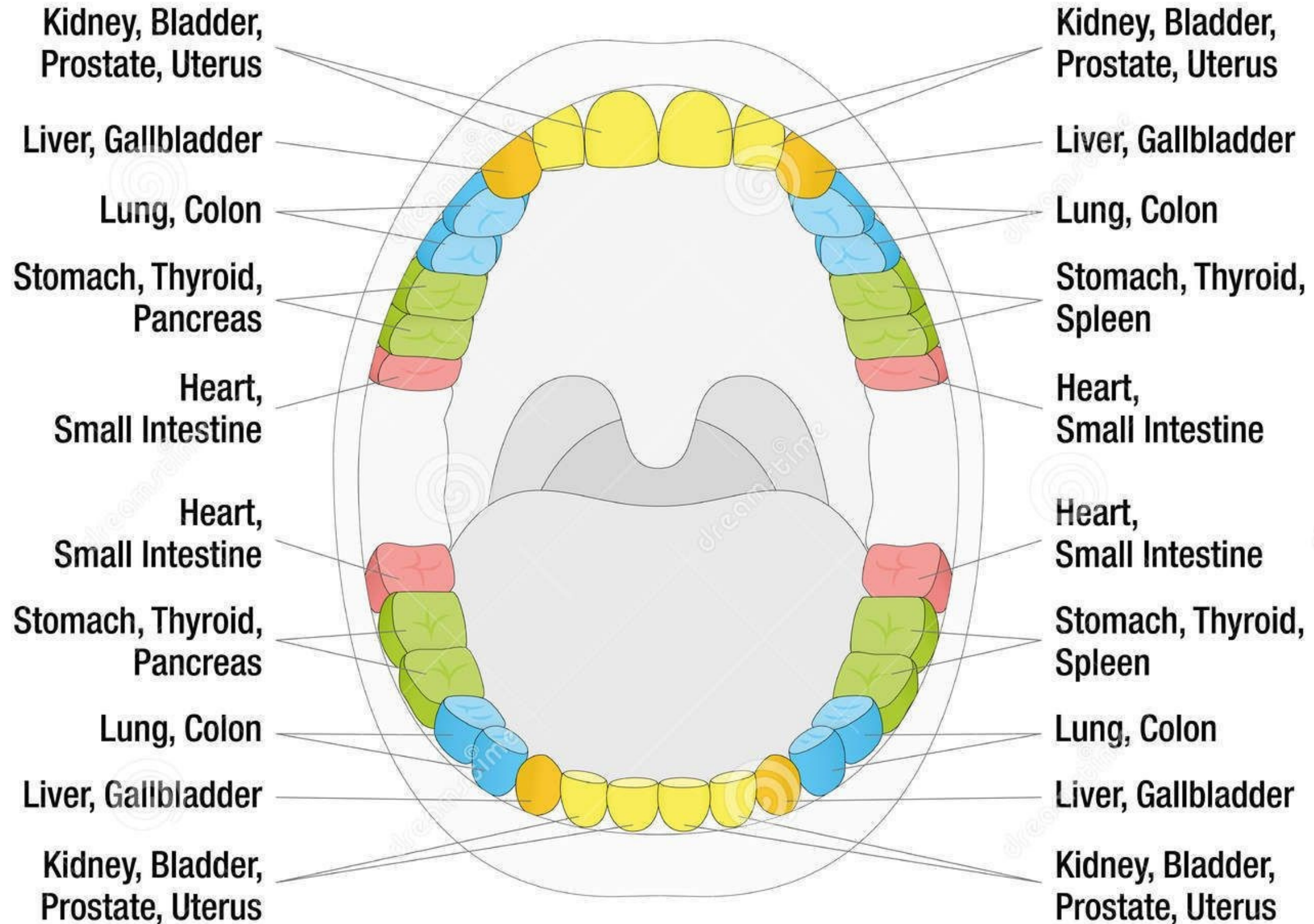


Teeth Reflexology Chart

**Corresponding internal organs
of the right side of the body**

**Corresponding internal organs
of the left side of the body**



Tooth Repair Toothpaste Recipe

- 1 Tbsp. baking soda
- 1/2 tsp. Xylitol (adjust to taste)
- 1 Tbsp. Coconut Oil
- Pinch of sea salt or a few Starr Walker Trace Mineral Drops, 10-15 drops choice essential oils

Mix well in small jar. Apply small amount to toothbrush. Brush, swish and rinse.

Some great Essential Oils to add: Thieves, Peppermint, Wintergreen, Spearmint, Citrus Fresh, Orange, Lemon, Cinnamon Bark, Lime, Clove

